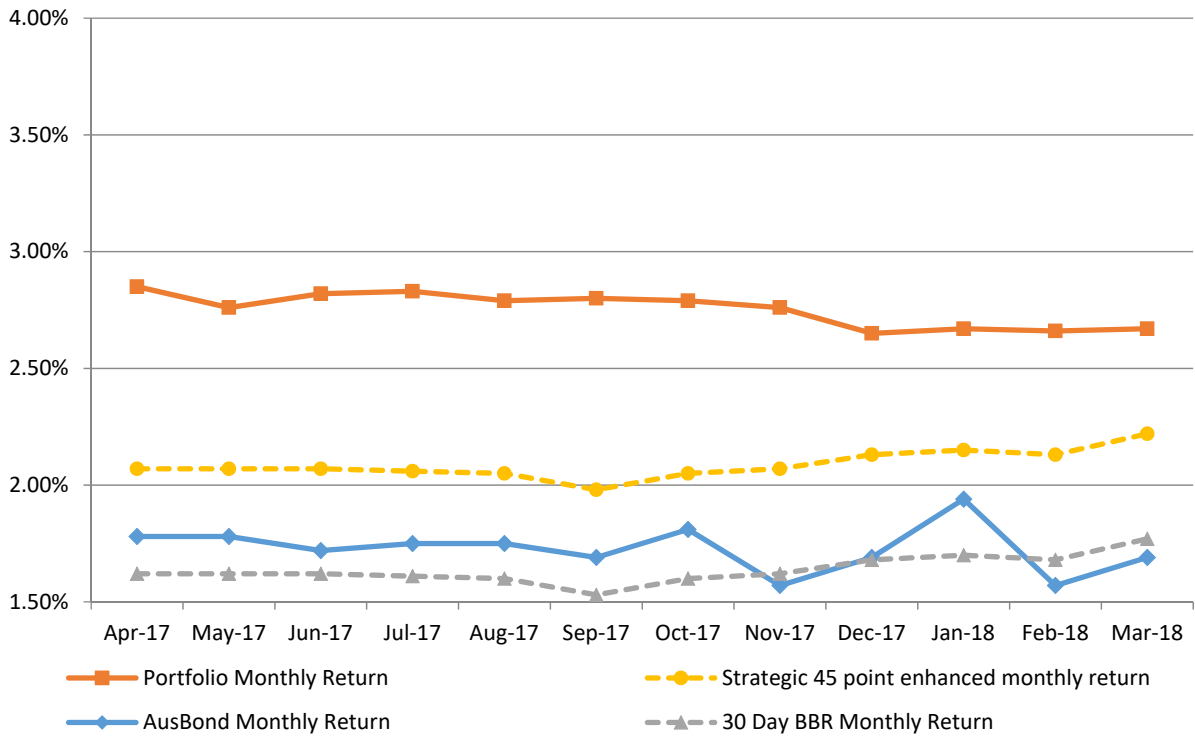


Attachment B

**Investment Performance
as at 31 March 2018**

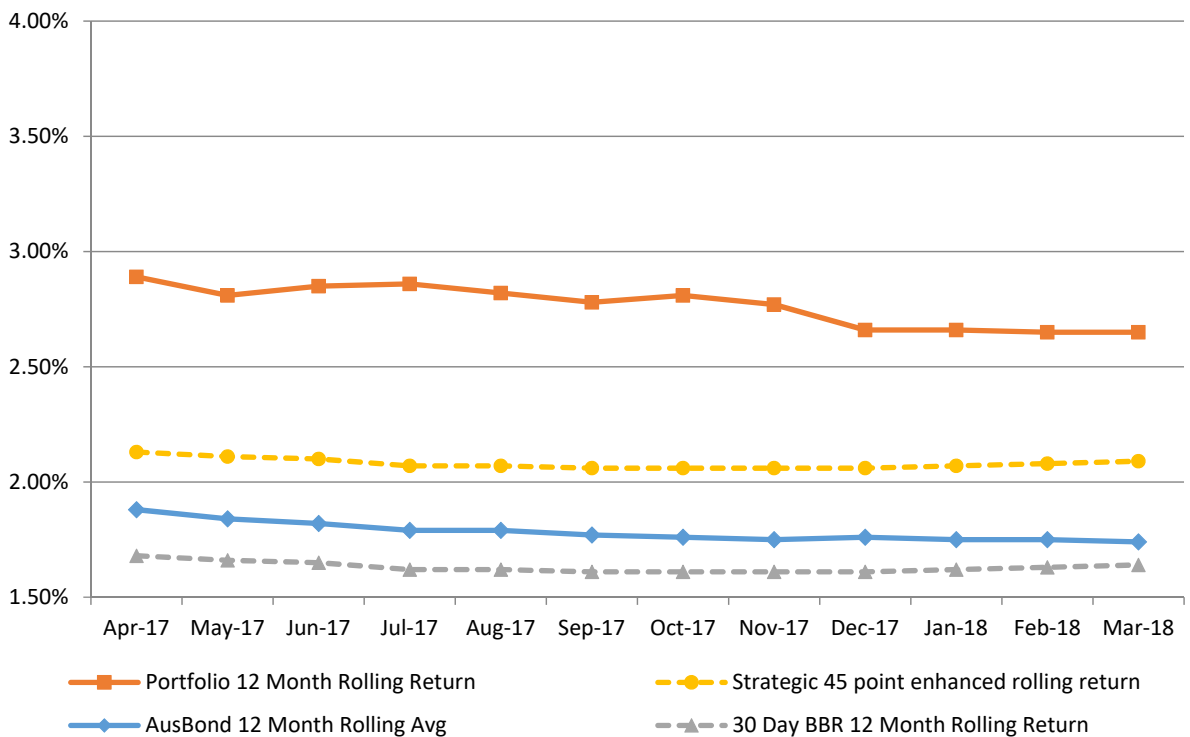
Monthly Results

**Actual Portfolio vs Strategic Enhanced Benchmark vs AusBond Benchmark vs 30 Day BBR Benchmark
March 2018**

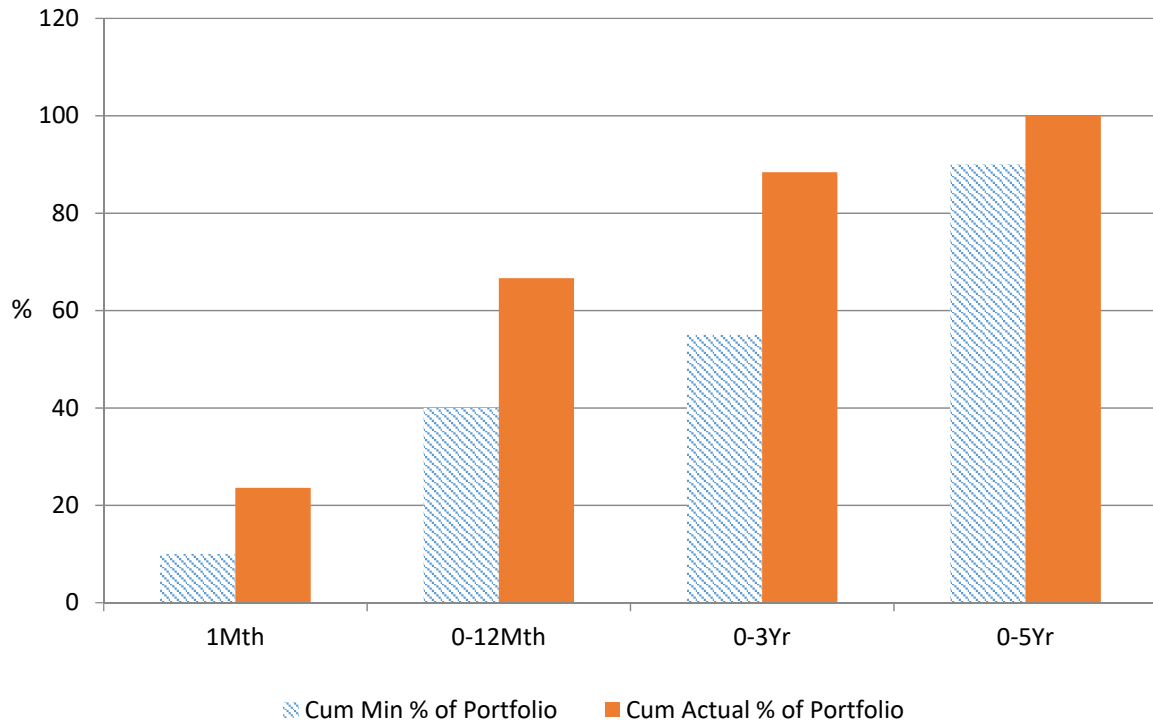


12 Month Rolling Averages

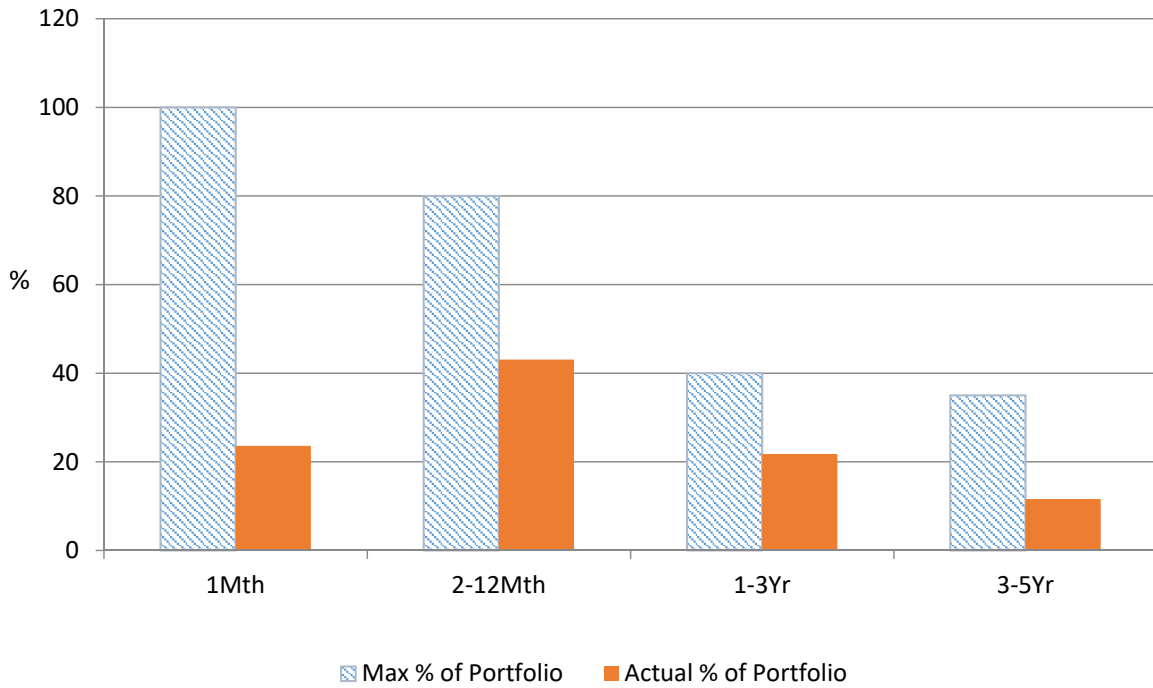
**Actual Portfolio vs Strategic Enhanced Benchmark vs AusBond Benchmark vs 30 Day BBR Benchmark
March 2018**



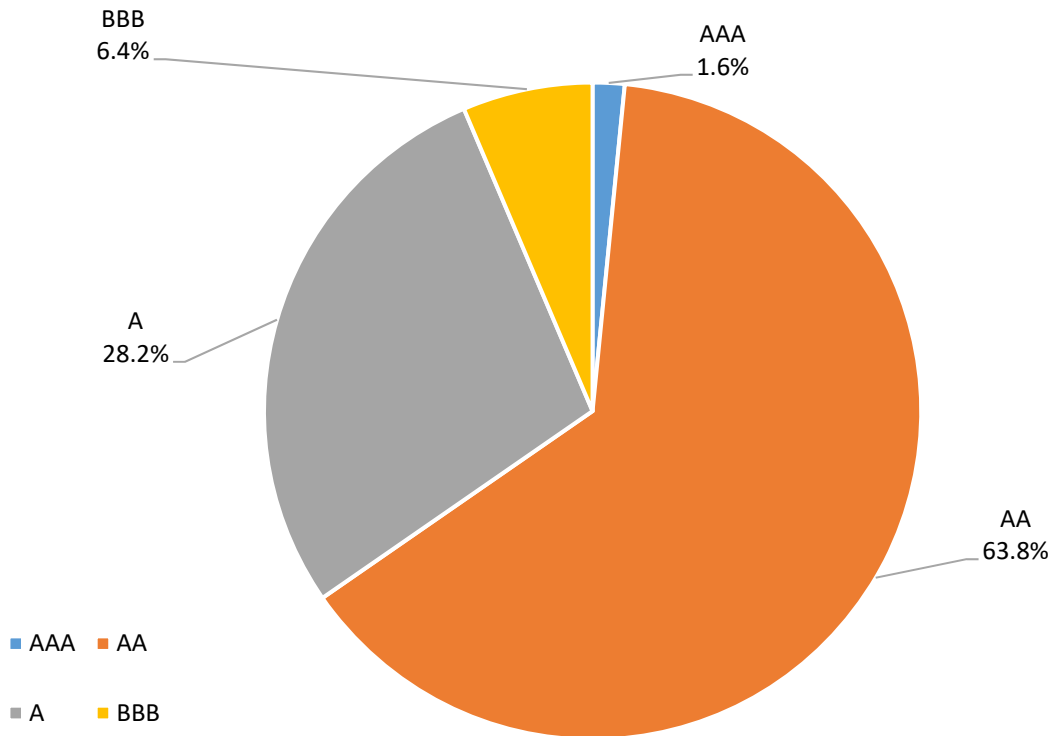
% Liquidity - Minimum Allocations as at 31 March 2018



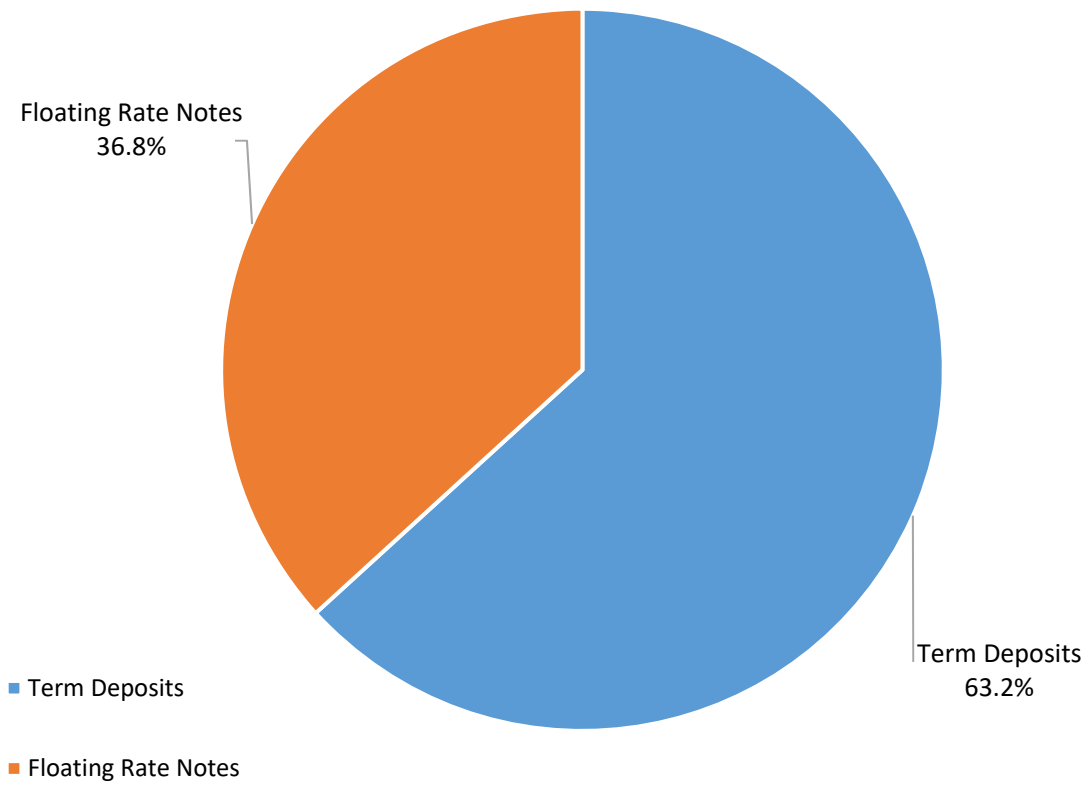
% Liquidity - Maximum Allowances as at 31 March 2018



Risk Profile as at 31 March 2018



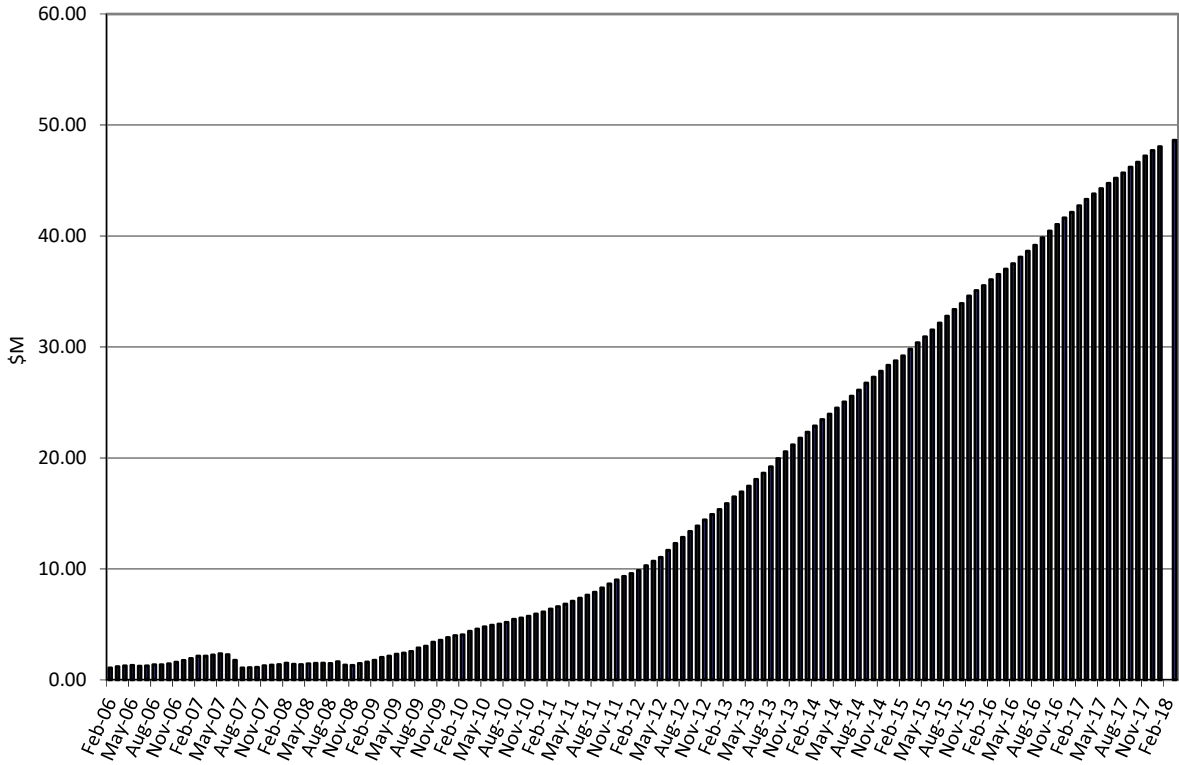
Investment Product Profile as at 31 March 2018



**Investment and cash distribution by financial institution as at
31 March 2018**

Institution Category	Financial Institution	Amount \$M	Financial Inst. %	Institution Cat. %
Australian Big 4 Bank (and related institutions)	ANZ Bank	30.0	4.9	
	Commonwealth Bank-related:	138.6	22.5	
	<i>Bankwest</i>	<i>70.0</i>	<i>11.3</i>	
	<i>Commonwealth Bank</i>	<i>68.6</i>	<i>11.1</i>	
	National Australia Bank	75.0	12.2	
	Westpac Banking Corporation	146.6	23.8	
Big 4 Total		309.2		63.2
Other Australian ADIs and Australian subsidiaries of foreign institutions	AMP Bank Ltd	10.0	1.6	
	Bank of China-Sydney Branch	5.0	0.8	
	Bank Of Queensland	49.0	7.9	
	Bendigo and Adelaide Bank	21.0	3.4	
	CUA Limited	40.0	6.5	
	Greater Bank	5.0	0.8	
	Heritage Bank	3.5	0.6	
	IMB	5.0	0.8	
	Members Equity Bank	39.3	6.4	
	Newcastle Permanent Building Society	17.0	2.8	
	Royal Bank of Canada - Sydney	9.5	1.5	
	Suncorp Bank	22.5	3.6	
Other ADI Total		226.8		36.8
Grand Total		617.0	100.0	100.0

Cumulative Outperformance over AusBond Benchmark - 2006-2018



Cumulative Outperformance over 30 Day BBR Benchmark - 2006-2018

